

COMPLETELY REMODELED



HIGH-END AMENITIES



connect to the city, your workforce  
& your future





CAMBRIDGE

BOSTON

90

93

MARINA BAY

QUINCY



# connect TO THE CITY

Completely remodeled and with superior access to Boston, 1200 Crown Colony has all the high-end urban amenities at a fraction of the cost.



### REDLINE ACCESS

27 MINS FROM QUINCY ADAMS STATION TO SOUTH STATION



### I-93 N ACCESS

30 MIN - 1 HR DRIVE FROM CAMBRIDGE TO 1200 CROWN COLONY



## building specs



### PARKING:

3.5/1,000 SF 833 SPACES  
(19 HANDICAPPED)



### LOADING DOCK:

2 EXTERIOR  
TAILBOARDS

### BUILDING SF:

234,668 sf

### # OF FLOORS:


7 floors



# connect TO YOUR WORKFORCE

 **QUINCY CENTER MBTA STOP** 

3 MIN DRIVE | 1.4 MILES

 **QUINCY ADAM MBTA STOP**

**LOGAN AIRPORT**  
22-35 MINS | 14.3 MILES



**QUINCY CENTER**  
6 MIN | 2 MILES

**IHOP** **Orangetheory FITNESS** **star market**  
**BANK OF AMERICA** **T.J. MAXX**

**DECO APARTMENTS**



3 MIN DRIVE | 1.5 MILES

**DUNKIN' DONUTS**



**Bright Horizons**

**BANK OF AMERICA**

**ELEVATION**  
Apartments at Crown Colony

**Marriott**

3



**REDLINE**

- 22 MINS TO BROADWAY/ANDREWS
- 24 MINS TO SOUTH STATION
- 34 MINS TO KENDALL SQUARE

**COMMUTER RAIL**

- GREENBUSH LINE
- KINGSTON/PLYMOUTH LINE
- MIDDLEBOROUGH/LAKEVILLE LINE

**SOUTH SHORE PLAZA**  
2 MILES | OVER 200 RETAILERS

**au bon pain** **california PIZZA KITCHEN** **NORDSTROM**  
**Apple** **Ninety Nine 99** **TARGET**  
**CHIPOTLE** **DAVIO'S** **DAVE & BUSTERS** **Red Robin** **H&M** **Johnny ROCKET**  
**The Cheesecake Factory** **AMC THEATRES** **SEPHORA**



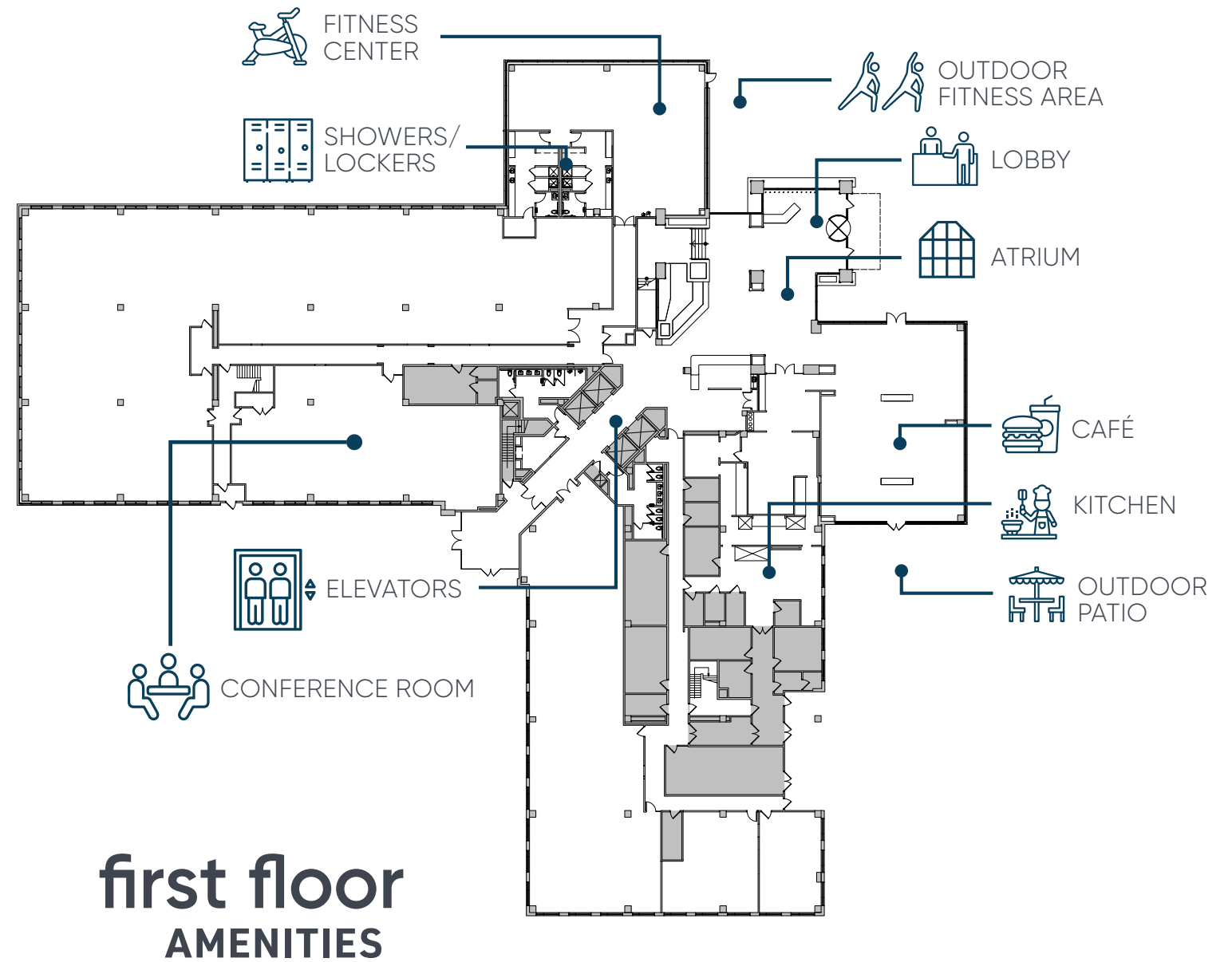
# connect TO YOUR FUTURE

Enjoy modern amenities and high-end finishes that will make your personnel feel valued and motivated. Be inspired by the rich and innovative history of Quincy as your company achieves new heights at 1200 Crown Colony.

## amenities

FULL-SERVICE CAFÉ  
AMENITY LOUNGE  
FITNESS CENTER

OUTDOOR PATIO  
CONFERENCE FACILITY



## first floor AMENITIES

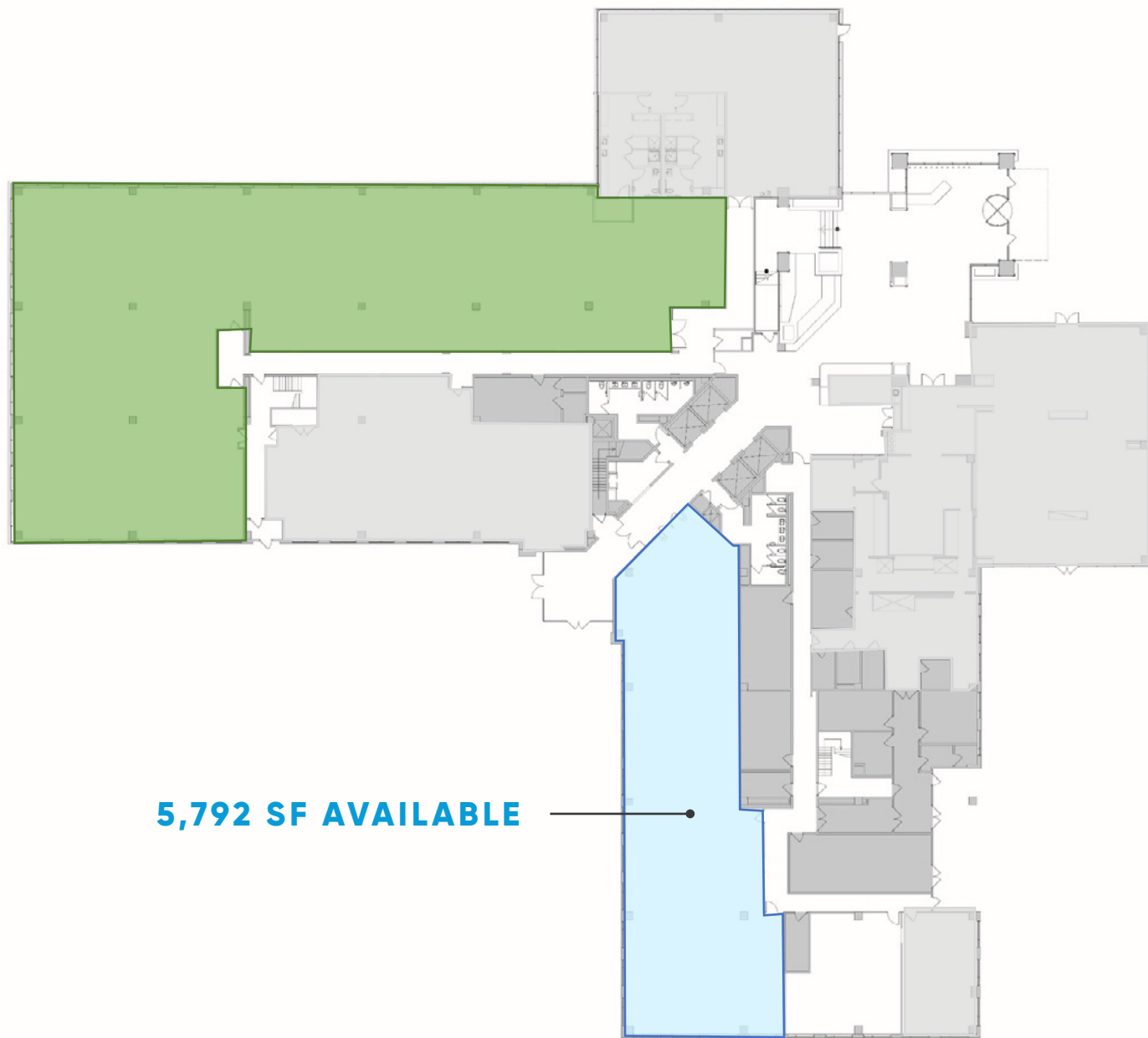




# floorplans

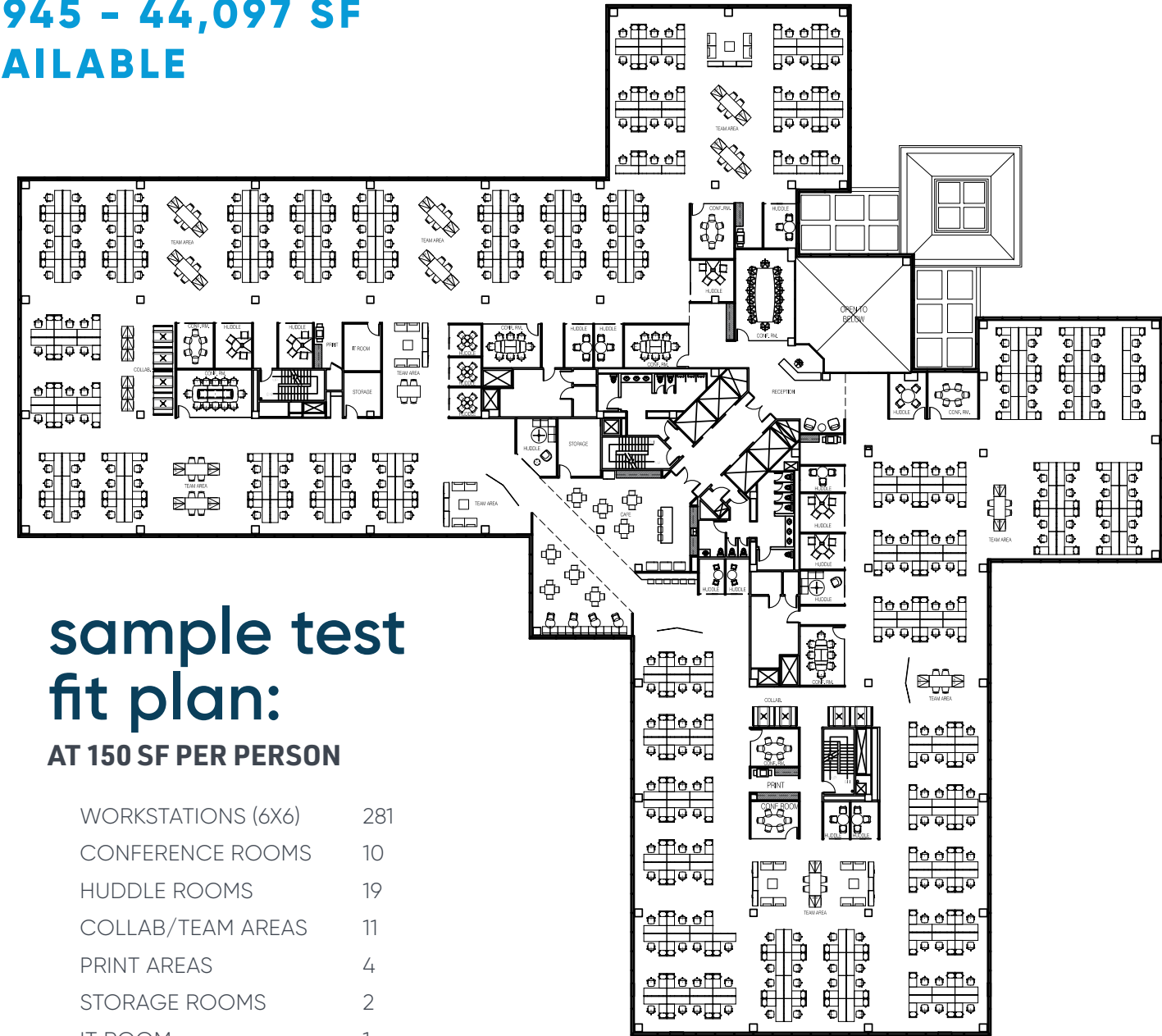
## AT 1200 CROWN COLONY

### 1ST FLOOR



**5,792 SF AVAILABLE**

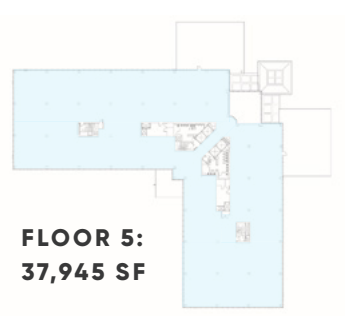
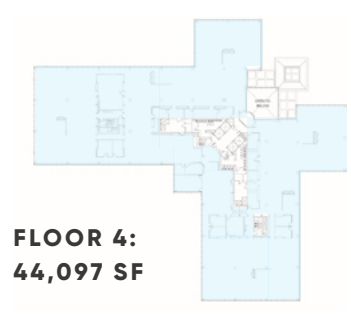
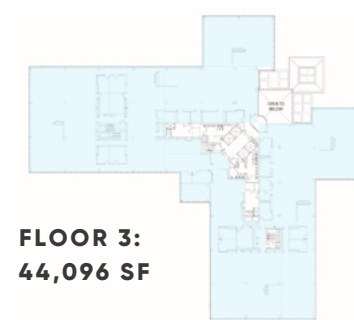
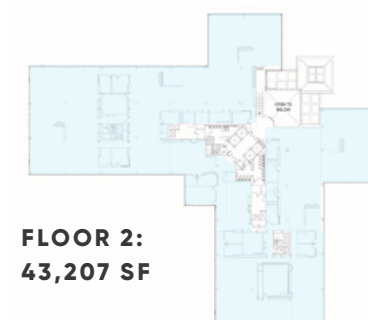
**FLOORS 2-5:**  
**37,945 - 44,097 SF**  
**AVAILABLE**



### sample test fit plan:

**AT 150 SF PER PERSON**

WORKSTATIONS (6X6)	281
CONFERENCE ROOMS	10
HUDDLE ROOMS	19
COLLAB/TEAM AREAS	11
PRINT AREAS	4
STORAGE ROOMS	2
IT ROOM	1
CAFE	1
RECEPTION	1





# about

## FOXROCK PROPERTIES

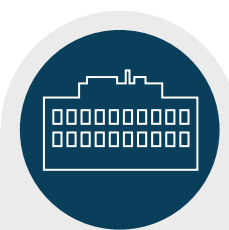
FoxRock Properties is a fast growing commercial real estate firm in the Greater Boston area. The FoxRock team has developed a diverse portfolio of properties, primarily along the South Shore, comprising five million square feet of medical, biotech, residential, retail, office, and industrial space. FoxRock focuses on projects that strengthen their cities and towns, promote health and wellness, and make positive impacts in the communities they serve. FoxRock's role in the rapid revitalization of Quincy Center is apparent, as it has several significant live-work-play, transit-oriented developments underway.

### WORKING TOGETHER TO BUILD A STRONGER COMMUNITY

Leasing at a FoxRock building means becoming part of a larger community.

At our buildings we:

- Highlight our tenants and their amazing work through regular newsletters
- Host tenant events like socials, happy hours, fitness classes, and networking
- Host quarterly givebacks through FoxRock's giving program, "FoxRock Cares," to support our local communities



# 5M+

SF OF OFFICE, MEDICAL, BIOTECH, RETAIL, AND INDUSTRIAL SPACE



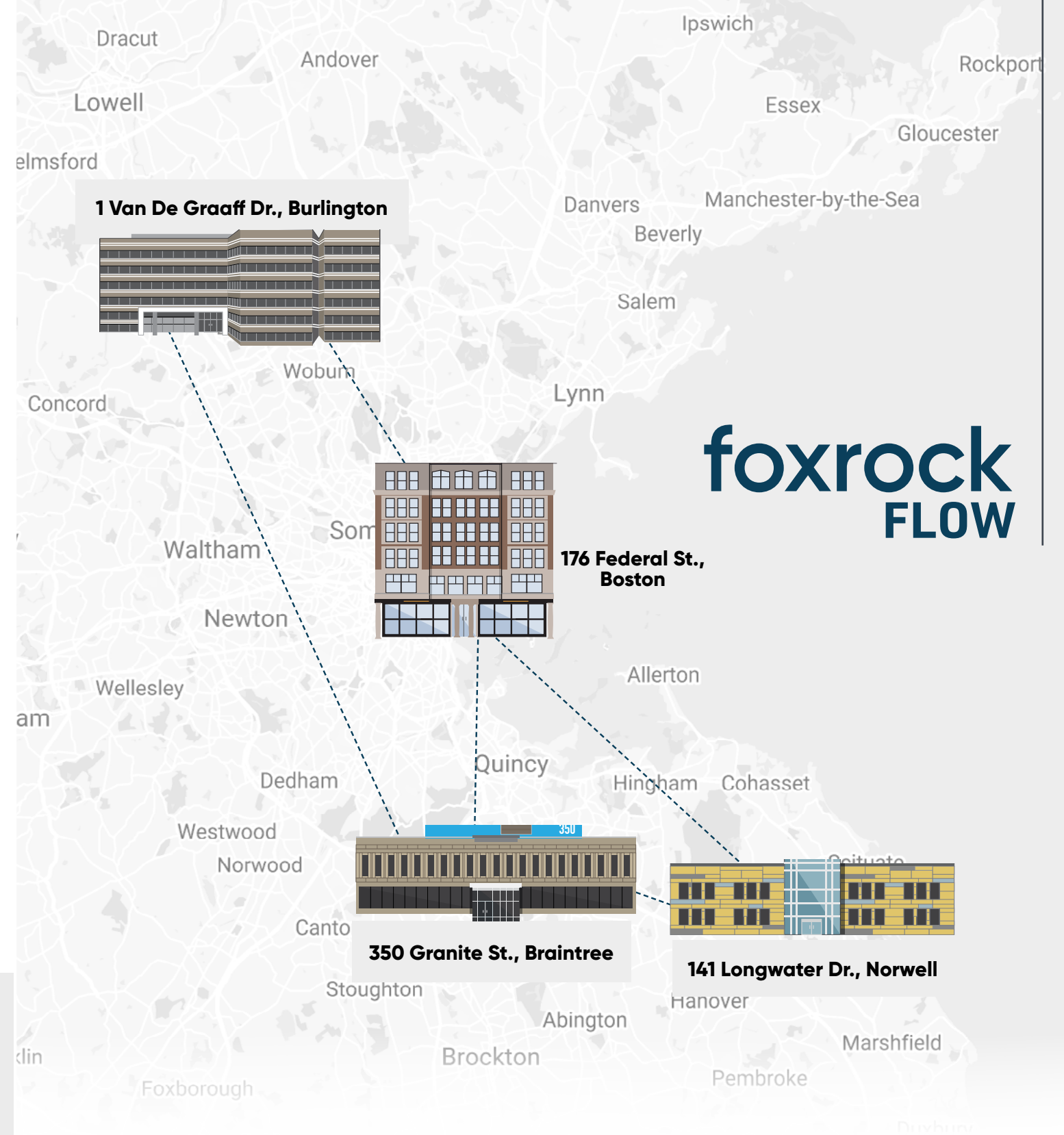
# 1M+

SF OF NEW MEDICAL, RETAIL, AND RESIDENTIAL PROJECTS PLANNED OR UNDERWAY FOR QUINCY CENTER



# 130+

TENANTS IN OUR PORTFOLIO



### BE ON THE GO, WITH FLOW

All FoxRock tenants will have access to a network of flexible workspace amenities in key locations throughout our portfolio, called FoxRock FLOW.

Book a desk, office, or conference room at one of our Boston, Burlington, Braintree, or Norwell office locations.

**Braintree, Norwell and Burlington FLOW spaces are currently online and ready for use. FLOW Boston is expected to be complete in 2024.**





## FOR MORE INFORMATION CONTACT:

**TYLER MCGRAIL**

617.863.8511

[TYLER.MCGRAIL@NMRK.COM](mailto:TYLER.MCGRAIL@NMRK.COM)

**MIKE FRISOLI**

617.863.8501

[MICHAEL.FRISOLI@NMRK.COM](mailto:MICHAEL.FRISOLI@NMRK.COM)

**MARGARET FEE**

617.863.8499

[MARGARET.FEE@NMRK.COM](mailto:MARGARET.FEE@NMRK.COM)

**NEWMARK**

 **FOXROCK**